



HABTOOR PALACE



The New World Address

Habtoor Palace sits at the finest address in Dubai. Located on the arterial Sheikh Zayed Road, the hotel's interiors is influenced by timeless Beaux-Arts architecture, and accentuated by bespoke elements such as the grand staircase and carefully selected artworks throughout the hotel. Further complementing its grandeur is a private helipad.

Part of Al Habtoor City, the urban integrated resort sits alongside two other renowned hotels, three high-rise residential towers, as well as La Perle by Dragone water theatre that are collectively located on the banks of the breathtaking Dubai Water Canal.

Dubai International Airport: 20 minutes
Al Maktoum International Airport: 40 minutes
Abu Dhabi International Airport: 90 minutes

Accommodations

There are 234 guestrooms including 52 suites, designed with a bright, airy ambience comprising impeccable details. Flagship suites include Sir Winston Churchill Suite and Middle East's first Bentley Suite. All rooms feature exquisite marble, double vanity bathrooms and state-of-the-art technologies.

The three-bedroom Sir Winston Churchill Suite is located on the highest floors, and features landscaped garden views and a rooftop plunge pool. The custom-designed one-bedroom Bentley Suite is inspired by the bespoke craftsmanship of the Bentley Mulsanne. All guests are provided with a personalized butler service, ensuring each stay is according to specific guest tastes and preferences.

Culinary Experience

Habtoor Palace extends culinary excellence across its seven dining venues. As one of the signature venues, BQ - French Kitchen & Bar is a modern interpretation of a brasserie serving redefined French favourites.

World Cut Steakhouse reimagines American classics in a sophisticated and warm setting. Serving a creative take on classic Middle Eastern fare, Le Patio evokes idyllic moments in an outdoor courtyard.

The Champagne Lounge exemplifies the sophistication and luxury of the brand. Guests can enjoy elegant socializing at Sidra, located on the mezzanine floor with views of the hotel's beautifully-landscaped gardens. Set amongst lush foliage, The Roof Gardens is an intimate outdoor venue where in-house guests can enjoy casual dining amid stylish cabanas.

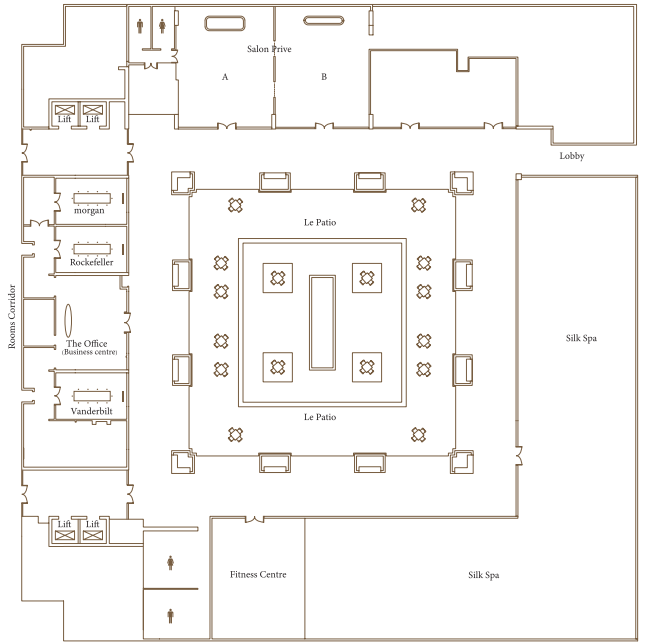
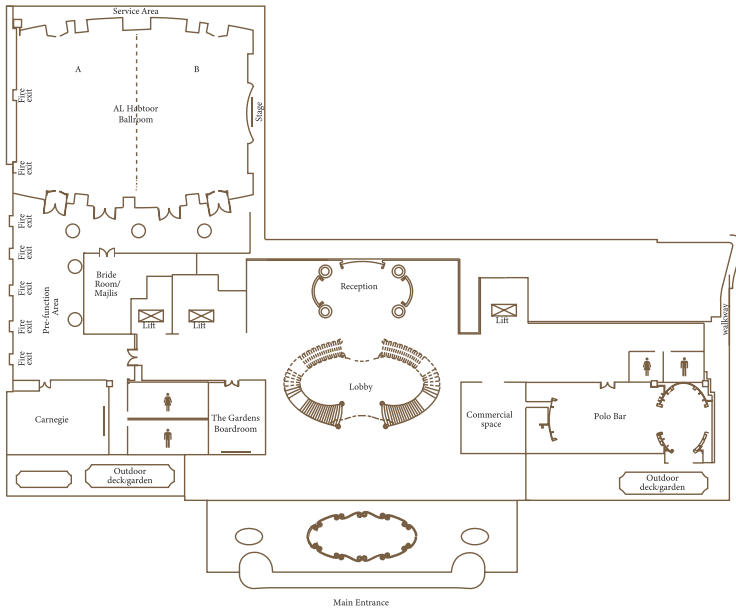


Silk Spa

Offering complete relaxation, Silk Spa consists of six treatment rooms, two hammams and separate female and male wet areas with steam rooms and saunas. A serene journey from the arrival to the departure, guests can enjoy the finest of luxuries. Individual moments are precisely tailored to create a unique experience through a spectrum of moods whether energising or calming.

Grand Gatherings

The 800-square metre Al Habtoor Ballroom and seven meeting rooms graciously accommodate gatherings from executive round-table meetings to grand occasions, providing guests every opportunity to curate unforgettable memories. The ballroom includes an exclusive majlis-styled seating area, making it ideal for social events such as weddings and anniversaries.



Meeting and Banquet Space - Ground Floor

Meeting and Banquet Space - Second Floor

ROOM NAME	اسم القاعة	LxW METRES	SQM	METRES							
Al Habtoor Ballroom A + B	قاعة الحيتور A + B	31.3 x 25.5	800	10.2	360	550	700	400	100	216	90
Al Habtoor Ballroom A	قاعة الحيتور A	15.65 x 25.5	400	10.2	180	275	350	200	50	108	45
Al Habtoor Ballroom B	قاعة الحيتور B	15.65 x 25.5	400	10.2	180	275	350	200	50	108	45
Al Habtoor Pre-Function (front)	قاعة الحيتور الاستقبال - أمامي	32 x 6	192	5.5	-	-	150	-	-	-	-
Al Habtoor Pre-Function (drop off)	قاعة الحيتور الاستقبال - النزول	18 x 9	162	5.5	-	-	100	-	-	-	-
Al Habtoor Foyer (Total)	قاعة الحيتور الاستقبال	NA	354	5.5	-	-	250	-	-	-	-
Carnegie	كارنيجي	10 x 11	110	3.75	60	60	80	40	24	36	20
The Gardens Boardroom	غرفة مدراء ذا غاردنز	9 x 10	90	3.7	-	-	-	-	-	-	12
Majlis	مجلس	8 x 6	48	4.5	Majlis Seating 12						
The Gardens / Helipad	ذا جاردنز / محيط الهليكوبتر	126 x 96	1,504	NA	min. 100	-	min. 100	-	-	-	-
Garden A	جاردنز A	15 x 20	300	NA	160	-	240	-	-	-	-
Garden B	جاردنز B	28 x 20	560	NA	200	-	320	-	-	-	-
Garden C	جاردنز C	28 x 23	644	NA	200	-	320	-	-	-	-

ROOM NAME	اسم القاعة	LxW METRES	SQM	METRES							
Morgan	مورجان	4 x 7	28	3.5	-	-	-	-	-	-	10
Rockefeller	روكفيلر	4 x 7	28	3.5	-	-	-	-	-	-	10
Vanderbilt	فاندريلت	4 x 7	28	3.5	-	-	-	-	-	-	10
Salon Privé A + B	سالون بريفي A + B	19.8 x 12	238	3.5	-	-	100	-	-	-	-
Salon Privé A	سالون بريفي A	9.9 x 12	119	3.5	50	40	50	30	20	30	20
Salon Privé B	سالون بريفي B	9.9 x 12	119	3.5	50	40	50	30	20	30	20

Al Habtoor City, Sheikh Zayed Road
P.O. Box 124405, Dubai, United Arab Emirates
+971 4 435 5555